

Tackle Box

**Redcliffe
Peninsula
Game & Sportfish
Club Inc.**

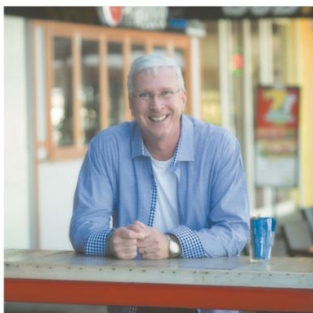


November 2015

Please send contributions to: Tackleboxrobbie@outlook.com.




Terry Day with a nice bar cod caught about 'Life's Great'.



just a local,
until I suit up

Frank De Raadt Licensed Real Estate Agent/Auctioneer

 **kindred**

Printing of Tackle Box compliments of:

Frank De Raadt

For all your real estate needs.

Ph. 0412 885288

frank@kindred.com.au

www.facebook.com/redcliffe.properties

www.redcliffe.properties



Frank De Raadt



your Agent then,
your Agent now

Please Call
0412 885 288

kindred.com.au

Tackle Box

Chairman's Report

November 2015

Hi All,

It's been a big month in fishing without turning a reel! We've had the GFAA and the ANSA Queensland committee see new presidents and committee members. Doug Sanderson (our old regional rep) is taking up the reigns of GFAA president and Peter Cox VP. Congrats to the entire committee. Details for this can be found on their website, check it out – it's worth a look if you haven't before...

The ANSA Q AGM saw almost an entire change in all roles of the executive committee, after the movement to dissolve ANSA Queensland was voted against by all but three clubs prior in an extraordinary general meeting. Nathan Johnston (Keppel Bay) was elected president unopposed, and more importantly, two of our very own join the team-

- **Maddie Doherty** elected in as Convenor.
- **Noel Day**, was asked to take a position of mentor to the executive committee.

Congratulations to both we will see some exciting new things out of ANSA going forward.

For anyone interested, a few of us are heading out to the Bjelke-Peterson Dam (Lake Barambah) for the club weekend Friday 13th-Sunday 15th November, returning in time for the weigh-in. Come join in the camping, chopping on red claw, tagging Bass by the hundreds and having a couple of quiet beverages amongst the family atmosphere. Get in contact with myself or Noel for the details, cheap weekend with plenty of laughs and hopefully a few fish (dogs are welcome on the camping grounds and we might even break out the tube if it's warm enough).

Our November All Tackle Comp is here! So sort out the teams and get the applications into us ASAP.

Looking forward to catching up with everyone at the meeting.

Keep a bend in it.

Greg (Skinny)



EDITOR'S NOTE:

IT IS WITH GREAT SADNESS THAT WE INFORM OUR MEMBERS THAT RAY THOMASON, THE CLUB'S PAST PRESIDENT AND LIFE MEMBER, PASSED AWAY ON NOVEMBER 4TH AFTER A LONG ILLNESS. RAY WAS AN INTEGRAL PART OF THE CLUB FOR MANY YEARS, AND SHARED GREAT TIMES AND FISHING ADVENTURES WITH SO MANY. TIGHT LINES FOREVER RAY - RIP.

Tackle Box

Weigh Master's Report

November 2015

Just a short report this month. There have been some fish caught including Striped and Blue Marlin out wide. Some boats have been fishing the shelf areas with their electric winches (sorry I mean reels) and scoring some Bar Tail Cod and other species.

Our monthly Club Barbeque was blessed with beautiful Sunday afternoon weather, sausages cooked to perfection, lovely sweets and great company, but sadly not many fish were weighed – in fact only one small snapper. No fish of the month caught so this month the prize jackpots to \$100 for either a Bass or Mahi Mahi.

Hopefully by my next report we might see some warmer water in close and some good catches. Don't forget to fill out our club books completely and hand the white form in as soon as possible. If you need tags leading up to the All Tackle Tournament I will have them available at our Tuesday night meeting and at the Sunday afternoon barbeque/weigh-in.

Tight lines.

Ralph



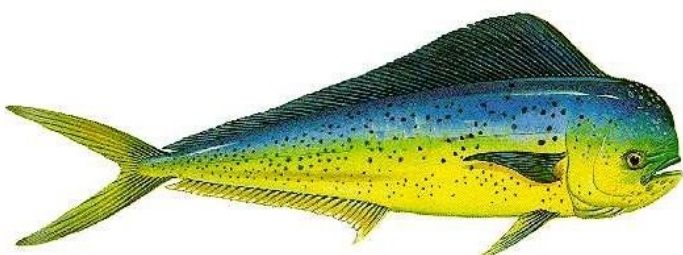
trask development corporation

Tackle Box

Fish of the Month

November 2015

NOVEMBER:		Mahi Mahi		Bass
MONTH	OFFSHORE SPECIES	PREVIOUS WINNER	INSHORE SPECIES	PREVIOUS WINNER
December	Wahoo	No winner	Mangrove Jack	No winner
January	Yellowfin Tuna	No winner	Whiting	Madeline Eagle
February	Mackerel	No winner	Cod	No winner
March	Mackerel Tuna	Jamain Seeto	Bream	Elizabeth Distel
April	Pearl Perch	Ron Lewis	Flathead	John Eagle
May	Sweetlip	No winner	Bass	Jacob Chain
June	Longtail Tuna	No winner	Bream	Andrew Doherty
July	Amberjack	No winner	Tailor	No winner
August	Pearl Perch	Noel Day	Cod	No winner
September	Snapper	Jamain Seeto	Bream	Andrew Doherty
October	Cobia	No winner	Flathead	No winner





Club Weekend

November 2015

CKR
BRAKES & SUSPENSION

- All Mechanical Repairs
- Wheel Alignments
- Safety Certificates (RWC)
- Log Book Servicing
- Brake Machining
- Diagnostic Scans
- Trailer servicing

Ph: 3889 3113
10 GRICE ST CLONTARF 4019

10% discount to all members
 or
Free wheel alignment with any service

To win the money for the monthly nominated fish inshore or offshore species, simply weigh in the heaviest **Mahi Mahi** or **Bass**. All fish weighed, regardless of whether they are in for the 'fish of the month' must be labelled with the angler's name and line class. To receive double club points, fish must be tagged or caught on the Club Weekend only and the cards correctly completed and handed in or fish weighed in at M.B.B.C. from 3.30pm to 4.30pm on the Sunday. Prizes for the heaviest 'fish of the month' will be awarded at the following club night.

Remember, club fishing weekend starts on midnight on Friday **13th November** finishing on **Sunday 15th November** at 3.30-4.30pm and the species are **Mahi Mahi** and **Bass**.



Tackle Box

Fish Caught

November 2015



Tackle Box

Club Sponsor Interview

November 2015

Peter Distel - DCS

You're a generous sponsor for our fishing club. What line of business are you in?

Our main company is Dust Collection Services Pty Ltd, which is involve with solving industrial environmental issues for our clients. This can involve a range of equipment and applications from the timber industry, flour mills, stock food, grain handling, foundries, metal recycling, mining, quarries and a host of other applications.

Is there any way our members can show their support to your business?

If they are involved in any of the above industries, we can probably help them.

One of DCS's projects for Sims Metal down in St Mary's, Sydney.



Tackle Box

Club Sponsor Interview

November 2015

Peter Distel - DCS

What is your preferred type of fishing?

That would have to be light and heavy game fishing, although a bit of reef fishing up north is a close second.

Why do you think it's important to sponsor the RPGSC?

For our club to grow, support juniors, which are our future, and provide facilities for our members we need to be able to offer great value to our members. The collective support of all our sponsors allows us to do this.



DCS

Dust Collection Services Pty Ltd

www.dcserv.com.au

Tackle Box

Points to End of October

November 2015

<u>Angler Male</u>	<u>Sports Points</u>	<u>Tag Sports Points</u>	<u>Angler</u>	<u>Club Day</u>
Andrew Doherty	1427	1210	Noel Day	586
Noel Day	586	484	Andrew Doherty	583
Michael King	476	390	Madeline Doherty	410
Mark Rose	249	36	Michael King	371
Grahame Rose	140	140	Mark Rose	249
Jacob Chain	101	0	Samuel King	194
Greg Skinner	80	80	Beau Rose	192
Mark Chain	37	0	Lynnie Day	164
John Smuck	22	0	Grahame Rose	140
Todd Jensen	15	0	Jacob Chain	101
			Janine Cole	101

<u>Angler</u>	<u>Game Points</u>	<u>Tag Game Points</u>	<u>Angler</u>	<u>Points</u>
Robert Johnston	1320	1320	Greg Skinner	80
Brad Clayton	1320	1320	Mark Chain	37
Madeline Eagle	1320	1320	Ralph Bowler	31
Shane Darlington	1320	1320	John Smuck	22
Noel Day	532	390	Todd Jensen	15

Vessel < 7 Mtrs Points

<u>Angler Female</u>	<u>Sports Points</u>	<u>Tag Sports Points</u>		
Madeline Doherty	630	550	Fish Repellent	2354
Joanne Doherty	237	210	Life's Great	1724
Lynnie Day	164	80	Guinness	791
Janine Cole	101	0	Little Wing	80
Rebecca Doherty	60	60	Poppy G	60
			Sanctuary	31
			Bloody Mary	15

<u>Angler Sub Junior</u>	<u>Sports Points</u>		<u>Vessel > 7 Mtrs</u>	<u>Points</u>
Beau Rose	192		Deep Blue	1320

<u>Angler Junior</u>	<u>Sports Points</u>	<u>Tag Sports Points</u>
Samuel King	314	300

Tackle Box

Biggest Fish/Most Caught

November 2015

Fish Species	Angler	Size
Amberjack	-	
Bass		
Bream	Andrew Doherty	430mm
Cobia		
Cod	Terry Day	18kg
Flathead	Beau Rose	.66 kg
Kingfish		
Mackerel	Sam King	380mm
Mahi Mahi		
Mulloway		
Pearl Perch	Noel Day	.82kg
Shark	-	
Snapper	Madeline Doherty	1.47kg
Tailor		
Trevally	Madeline Doherty	1kg
Tuna	Noel Day	7.58kg
Wahoo		
Whiting	Jacob Chain	.23kg

We have been tracking the biggest fish during the fishing year 2015 -2016 just for fun, so if can beat any of these just contact me noelday@optusnet.com.au with the details and we will add your name to the list so good luck, get out there and catch some fish



'Filthy' flying tag flags for Madelaine Eagle's striped marlin and Brad Clayton's blue marlin, both caught on the Grand Final long weekend.

1 st Billfish	Angler	Boat	Fish
	Robert Johnston	Deep Blue	Striped Marlin

Most Billfish tagged 1 each to Robert Johnston, Brad Clayton, Madeline Eagle and Shane Darlington.

Tackle Box

Our Great Sponsors

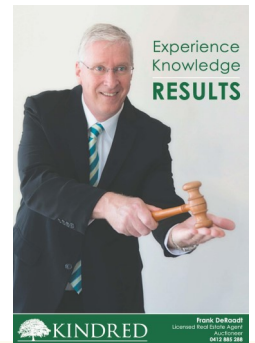
November



task development corporation



CLUB
MARINE
INSURANCE



Moreton Bay
Regional Council



Please send any contributions
and photos for Tackle Box to the
editor Robbie at:

tackleboxrobbie@outlook.com

Tackle Box

News

November 2015



Our ref 230/00815
Your ref
Enquiries Jonathan Beatty

Department of
Transport and Main Roads

20 October 2015

To Whom It May Concern,

I previously wrote to you on 11 September 2015 regarding some proposed works on the Tangalooma Wrecks to stabilise the overall system. This letter is to provide an update on when and how the works will be completed, as well as the public safety management strategies that will be utilised during the period.

A contractor has been selected and is currently scheduled to begin works on 26 October 2015. Works are expected to take 10 to 12 working days, dependant on the weather. It is hoped that all plant and equipment will be departing the site on or about 07 November 2015. Please note that work will be conducted through the weekend beginning 31 October to expedite the overall process.

With the contractor selected and their proposed work methodology reviewed, public safety will be managed through an exclusion zone placed around the work barge instead of the entire wreck system. This exclusion zone 75m from work barge, will be marked by red pennant buoys and be moved with the barge as the works progress. In addition there will be two yellow buoys marking the barges anchors. This is depicted on Map C7-357-1, attached at enclosure 1.

The exclusion zone will be established under a Harbour Master's Direction as per the *Transport Operations (Marine Safety) Act 1994* once the barge is established on site. It will be regularly patrolled by the Queensland Water Police, NPSR Rangers, Maritime Safety Queensland Officers and the Queensland Boating and Fisheries Patrol. As the barge and associated exclusion zone move from wreck to wreck conducting works, people and vessels are requested to remain cognisant of the dynamic nature of the work and wary of the moving exclusion zone.

Once the works are complete, those high risk structures above the waterline will have been lowered to the seaward side of the wrecks or down into the hulls themselves to add further stability to the wreck system and aid in its role of providing a safe anchorage on the western shore of Moreton Island. The wreck system overall will remain in place.



One of the Wrecks.



CLUB MARINE INSURANCE

Tackle Box

News

November 2015

I take this opportunity to remind you that the wrecks are currently structurally unstable. It is recommended that people keep well clear of the wrecks, avoiding activities such as mooring boats to structures, climbing on or swimming through them. The works will result in a safer and more efficient anchorage. However due to the dynamic nature of the marine environment there will be an ongoing risk of personal injury and the public will be advised not to climb or swim through the structures.

If you have any questions, please contact the Assistant Regional Harbour Master, on 07 3632 7500.

Yours sincerely



Glenn N Hale
Regional Harbour Master (Brisbane)

Raft-ups to the Wrecks will never be quite the same...

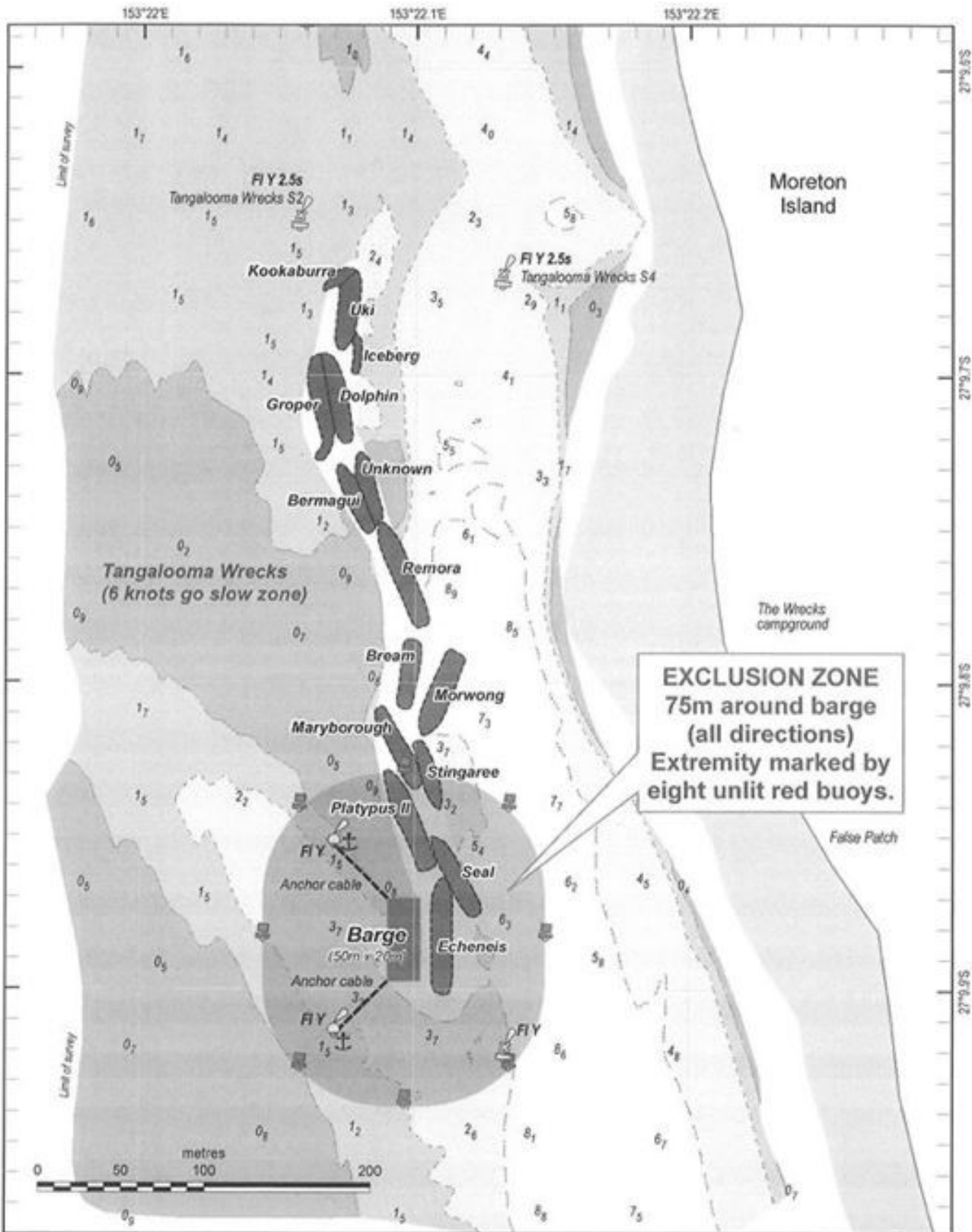


LANDPARTNERS
built environment consultants



News

November 2015



Horizontal datum: GDA94 (WGS84 compatible)
Projection: UTM (MGA zone 56)
Vertical datum: LAT (Lowest Astronomical Tide)

Map C7-357-1

Prepared 14 October 2015
Maritime Safety Queensland
Spatial Services

**TANGALOOMA WRECKS
MORETON ISLAND
EXCLUSION ZONE**

Sounding survey date 10 August 2015

© The State of Queensland 2015
(Transport and Main Roads)
Licence available to view at
<http://creativecommons.org/licenses/by-nc-nd/3.0/au>



Tackle Box

Upcoming Tournaments

November 2015

UPCOMING TOURNAMENTS



Hervey Bay Game Fish Classic

13/11/2015 - 15/11/2015

www.hbgfc.org.au



Redcliffe All Tackle

20/11/2015 - 22/11/2015

www.rpgsc.com.au



Yksfc Makaira Bullfight

14/11/2015 - 15/11/2015

www.ykbc.com.au



Mooloolaba Game Fishing Club

Billfish Bash

27/11/2015 - 29/11/2015

www.mgfc.com.au



**Cairns Bluewater Marlin
Tournament**

19/11/2015 - 22/11/2015

www.cairnsbluewatergfc.com.au

The logo for Calibre Consulting. It features a stylized 'C' made of two curved lines, one blue and one yellow. Below the 'C' is the word 'calibre' in a large, bold, black sans-serif font, and below that is the word 'CONSULTING' in a smaller, bold, black sans-serif font.

calibre
CONSULTING

Tackle Box

Upcoming Tournaments

November 2015



Redcliffe All Tackle Tournament

19th - 22nd November 2015

The inaugural Redcliffe All Tackle Tournament is a Q.G.F.A. sanctioned light and heavy tackle tournament, hosted by the Redcliffe Peninsula Game & Sportfish Club Inc. Venue will be the Moreton Bay Boat Club - Bird O'Passage Parade, Scarborough, QLD.

Thursday 19th Nov. Registration & Briefing - 6.30pm at MBBC

Saturday 21st Nov. Fishing - 7am to 4pm - No requirement to return to port or MBBC

Sunday 22nd Nov. Fishing - 7am to 3pm & Dinner & Presentation 6.30pm at MBBC

Tournament Entry Cost

\$120.00 per adult angler (over 16 years of age)

\$90.00 per junior angler (under 16 years of age)

\$63.00 extra for non QGFA anglers.

(Entry fee will cover anglers who will receive a tournament shirt, Red fees, nibbles on briefing night and buffet dinner on the Sunday evening presentation).

For more information and entry forms visit www.rpgsc.com.au

Tournament director - Mick King - 0409 750 677 - kingsfour@bigpond.com

Club Secretary - Greg Evans - 0407 010 957 - greg.evans1@bigpond.com



Tackle Box

Redcliffe All Tackle Tournament Rules

November 2015

Memberships

All anglers must be current financial members of a club affiliated with G.F.A.A. or Q.G.F.A and proof of membership may be required. Membership will be organised prior to Briefing Night.

Entry

Entry forms must be received by the Tournament Committee prior to the start of the Briefing Night.

Trophies and Prizes

CHAMPION 2 BOAT TEAM - \$1000 + Trophy

CHAMPION ANGLER - \$1000 + Trophy

CHAMPION JUNIOR ANGLER - \$500 + Trophy

CHAMPION BOAT & CREW Over 7Metres - \$1000 + Trophy

CHAMPION BOAT & CREW Under 7 Metres - \$1000 + Trophy

CHAMPION ANGLER OTHER SPECIES - \$500 + Trophy

FIRST BILLFISH TAGGED - \$500 + Trophy

LAST BILLFISH TAGGED - \$500 + Trophy

Lucky Angler Prize

1st - \$500, 2nd - \$200, 3rd - \$100.

All anglers that register before 13th November 2015 will go into the Lucky Angler Draw.

Briefing

It is expected that at least one member of each team to attend the briefing and Calcutta on Briefing Night.

Home ports

Boats may depart and return to any port each day of the tournament.

Calcutta

The Calcutta will be determined by highest point scoring boats overall. 1st, 2nd and 3rd.

Fishing Grounds

Fishing grounds will be between lines directly east of Point Cartwright to a line directly East of Point Lookout and all oceanic waters in between.

Weather and Breakdowns

No allowance will be made for fishing time lost during bad weather or breakdowns. The Tournament Committee reserves the right to cancel or postpone fishing due to bad weather at any time. In regard to anglers' entry fees, arrangements will be made if the tournament is cancelled or postponed.

Nominated Teams Event

Tournament organisers will randomly draw teams of 2 boats for the Teams Event on Briefing Night. In the case of an odd number of boats, the last boat drawn will be teamed up with another randomly drawn boat. The team with the highest combined score will be awarded the Champion 2 Boat Team.

Presentation

Each angler must be present at the Presentation if they are to receive a prize or trophy.

Tackle Box

Redcliffe All Tackle Tournament Rules

November 2015

Radio Skeds

Competing boats must have VHF radio and skippers must keep radio sked sheets. Skeds will be on VHF21 at 10.03am, 1.03pm and 3.03pm for Saturday (Day 1) and at 10.30am and 1.03pm for Sunday (Day 2). Boats are to report name, grid position, strikes, hook ups, tags or captures, angler's name and species to the Game Fish Base. A penalty may apply for failure to respond to skeds. 1st Billfish tagged MUST be called in immediately.

Boat Length

For the purpose of the tournament, boat length overall to be determined from the measurement taken from the bow (excluding bowsprit) to the stern (excluding outboard pods). This measurement will be used to determine 7 metres and under, or over 7 metres.

Weigh-in

The weigh-in will be conducted at Moreton Bay Boat Club, Scarborough.

On day 1 - Saturday: Weigh station will be open between 4.30pm and 6.30pm.

On day 2 - Sunday: Weigh station will be open between 3.30pm and 5.30pm.

Fishing caught on Day 1 may be weighed-in on Day 2 but must be in reasonable condition. Decaying fish will not be accepted by the weigh master for weighing. Fish possession limits must be adhered to. Tag cards for billfish tagged on Day 1 may be handed to Weighmaster at the Day 2 weigh-in.

No points will be recorded unless capture forms are filled in correctly for both tagged and captured fish. To receive points, each angler must present their capture forms, tag cards and captures to the Weighmaster in person and must remain with the Weighmaster during weighing and recording. There will be a limit of three fish of any one species per angler per day that may be weighed.

No fish are to be left at the weigh station and all unwanted fish must be disposed of in the correct manner. Points will be deducted for any infringements.

Tag & Release Points

Tag points will be allocated to Billfish ONLY.

Tag points will be allocated as per this table

Inside 100 metre line			Outside 100 metre line		
6KG	8KG	10 KG	24KG	37KG	60KG
800	750	700	1600	1500	1400

Only NSW DPI and GFAA approved billfish tags are to be used, failure to use the correct tags will result in zero points being allocated. It is the responsibility of each competing boat to provide their own tags.

Capture Points

Capture points are calculated as follows: Fish weight multiplied by 100 divided by line class.

Fish may be dressed and a 10% allowance will be made. However potential record claims must be presented intact.

Other species

A limit of 3 fish of any one species per angler per day. Any fish to weigh must be equal to or greater than line class. Eligible Species Include, Yellowfin Tuna, Longtail Tuna, Spanish Mackerel, Mahi Mahi, Cobia, Wahoo and Snapper.



Tackle Box

Redcliffe All Tackle Tournament Rules

November 2015

FISHING RULES

1. Each team will consist of no more than 6 and no less than two anglers.
2. There will be two line categories: Light tackle 6kg, 8kg and 10kg only inside the 100 metre. Heavy tackle 24kg, 37kg and 60kg only outside the 100 meters. Game base must be notified when changing line categories.
3. A maximum of two rods per angler only at any one time, except when live baiting.
4. Live baiting - one rod per angler to be used and cannot be handled by others.
5. No live bait capture is permitted prior to commencement of fishing on day one.
6. Each angler to receive equal fishing opportunity.
7. Skippers may manoeuvre boat to assist anglers.
8. Boat crew are not permitted to assist in any way other than to tag and release or capture the fish as per G.F.A.A rules. Points apply when tag is inserted.
9. Hook ups that go into overtime are only permitted on the Saturday and must be reported to game base prior to cease fishing. Game base is to be updated on progress when requested.
10. The only "other species" eligible for weighing are Yellowfin Tuna, Longtail Tuna, Spanish Mackerel, Mahi Mahi, Cobia, Wahoo and Snapper. Capture must be equal to or greater than line class. A weigh limit of 3 of any one species per angler per day will apply.
11. In the event of a tie, the first to attain the total score will be deemed as the winner.
12. The tournament committee will decide all trophy and category winners. The Club reserves the right to review the awarding of any trophy.
13. An angler must submit any protests relating to the competition in writing no later than one hour after the close of the weigh-in on the day of the alleged infringement. Any decision of the Tournament Committee is final.
14. Fishing area limits will be as per grid sheet supplied at the Briefing Night. All vessels must log on and off with game fish base. In the event of a vessel returning early, they must notify game fish base. Boats logging off for the day are deemed to have ceased fishing for that day.
15. Boat skipper or team captain must sign registration and waiver form on behalf of crew as part of their entry to the tournament.
16. Q.G.F.A Rules and Regulations and Queensland Fisheries restrictions apply.

Fuel and Berths

Fuel and ice will be available (details on Briefing Night). The MBBC Marina berths will be available to competitors on request.

Amenities

There are amenities available at the club including showers. Ice is available from the club bar.

Boat Insurance

All boats nominating to fish the Redcliffe All Tackle are required to have current boat insurance. Details of such insurance must be completed on the entry form.

Misconduct

The Tournament Committee reserves the right at any stage of the competition to disqualify or deduct points from individuals or teams who are deemed to have conducted themselves in a disrespectful manner and are deemed to have brought the sport of Gamefishing or the RPG&SC Inc. or the Moreton Bay Boat Club (MBBC) into disrepute. MBBC licensing regulations must be observed including appropriate dress codes, alcohol restrictions and noise limits. Alcohol that is opened on the boat must be consumed on the boat while docked at MBBC. MBBC staff must be respected and directions followed. **No thongs in the club after 7pm. Please bring shoes.**

Tackle Box

Redcliffe All Tackle Tournament Registration November 2015

 REDCLIFFE ALL TACKLE TOURNAMENT - REGISTRATION FORM																																							
Boat name:		Length: metres																																					
Skipper/Owner:		Berth required: Yes / No																																					
Mobile:		Email:																																					
Boat insurance details (mandatory) Company:																																							
Policy no:		Expiry date:																																					
<table border="1"> <thead> <tr> <th>Angler's Name</th> <th>M/F/J</th> <th>Club</th> <th>Shirt size</th> <th>Office</th> </tr> </thead> <tbody> <tr><td>1.</td><td></td><td></td><td></td><td></td></tr> <tr><td>2.</td><td></td><td></td><td></td><td></td></tr> <tr><td>3.</td><td></td><td></td><td></td><td></td></tr> <tr><td>4.</td><td></td><td></td><td></td><td></td></tr> <tr><td>5.</td><td></td><td></td><td></td><td></td></tr> <tr><td>6.</td><td></td><td></td><td></td><td></td></tr> </tbody> </table>					Angler's Name	M/F/J	Club	Shirt size	Office	1.					2.					3.					4.					5.					6.				
Angler's Name	M/F/J	Club	Shirt size	Office																																			
1.																																							
2.																																							
3.																																							
4.																																							
5.																																							
6.																																							
Total number seniors anglers		x \$120	=																																				
Total number of junior anglers		x \$90	=																																				
Additional Presentation meals		x \$30	=																																				
Total Cost Payable		=																																					

I wish to pay by Credit Card - MasterCard / Visa <input type="checkbox"/> Cash <input type="checkbox"/> Cheque <input type="checkbox"/> Direct payment <input type="checkbox"/>	
Card Number: _____	Expiry Date: ____/____
Name on Card (Print): _____	Signature: _____
Direct Payment into Account Name: Redcliffe Peninsula Game & Sportfish Club	
BSB - 034 059 Account Number - 367 662 Reference number: Name of the boat.	
Please email entry form to Mick King: kingsfour@bigpond.com or contact on 0409 750 677.	
<i>Waiver - All on board safety remains the responsibility of the skipper/owner and crew. We agree to the rules as published. In consideration of your accepting me/us as a competitor/guest, I/we absolve the Redcliffe Game & Sportfish Club Inc., its committee, officers bearers, members and sponsors as such from any liability whatsoever arising and occurring or resulting from the tournament, and I/we hereby indemnify you and agree to keep you indemnified against all claims, damages, costs and loss that be claimed or awarded against you, or that you may suffer resulting from injury or loss to me/us or any of my/our invitees or licensees or guests or to any property of my/our invitees, licensees or guests. I/we accept that the decision of the committee in awarding trophies and prizes is at the discretion of the Tournament Committee and their decision is final.</i>	
Team Captain's Signature: _____	Print name: _____
Date: ____/____/____	